

All-Day Dining

To Begin...

Edamame

Classic steamed soybeans £6

Sriracha Edamame

Soybeans with a spicy sriracha kick £8

Sweet Potato Tempura

Lightly battered and crispy sweet potato £8

Sesame Chicken Wings

Glazed and flavorful wings (3 pcs) £12

Deep-Fried Baby Squid Karaage

Golden and crispy squid bites £12

Chicken Karaage

Juicy Japanese-style fried chicken £12

Chawanmushi with Ikura

Silky steamed egg custard topped with salmon roe £14

Asari Clams

Fresh Manila clams with sake and butter £16

Japanese Style Salad

Mixed greens with a refreshing wafu dressing. £14

Salmon Carpaccio

Thinly sliced salmon with yuzu ponzu jelly and salmon roe £16

Yellowtail Carpaccio

Yellowtail with truffle shoyu jelly, tobiko, and Japanese ginger flower £17



All-Day Dining

Follow-on...

Shareable mains and signature specialties

Perfect for sampling and sharing at the table:

Monkfish Soup

Monkfish bone broth with lettuce, tomato, and tofu, served with rice £48

Tonkatsu Shabu Shabu

Pork belly with napa cabbage, shiitake, leek, carrots, tofu, and glass noodles £48 (additional pork for £33)

Wagyu Sukiyaki

Premium wagyu beef with vegetables, tofu, and fresh egg yolk dips £56 (additional beef for £41)

Lacquer Roll

Seared toro with cucumber £24

Fried Oyster Roll

Crispy oysters wrapped in sushi rice and nori £22

Vegetarian Sushi Roll

Fresh vegetable medley wrapped in sushi rice £17

Tempura Moriwase

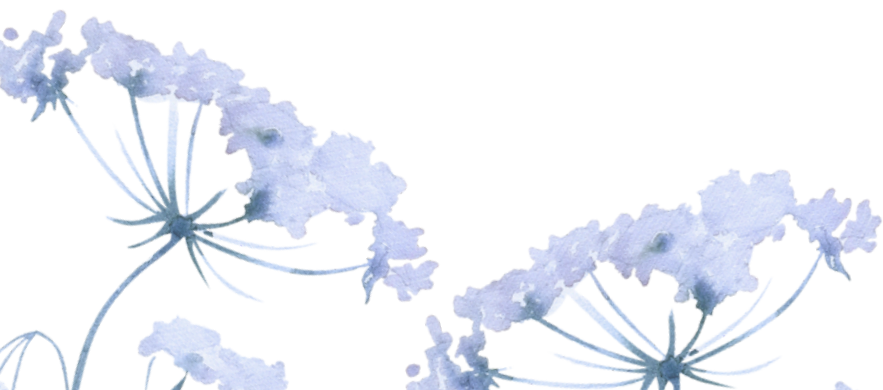
3 tiger prawns and 4 vegetable tempura pieces, served with dipping sauce £25

Lobster Tempura

Crispy lobster with vegetable tempura and dipping sauce £38

Yasai Tempura

Assorted vegetable and mushroom tempura £18



All-Day Dining

Follow-on...

All-Time Favorites

Fish and Chips

Japanese beer-battered haddock, fries, and yuzu pepper mayo £22

Gindara Saikyo Yaki

24-hour-miso-marinated black cod £26

Wagyu Beef Stew

Tender wagyu beef in a rich stew, served with rice £32

Lobster Laksa

Halflobster with rice noodles in a spicy coconut curry £26

Roti Canai

Indian flatbread served with a flavorful chicken curry leg £22

A5 Wagyu Beef Sando

Japanese wagyu beef sandwich with crispy fries. £38

Aglio Olio Seafood Linguine

Linguine with fresh clams, prawns, squid, garlic & chili £24

To Complement...

Plain White Rice £5

Garlic Fried Rice £10

Sweet Potato Fries £8

French Fries £8

Truffle Fries £12

Sautéed Seasonal Vegetables £12



All-Day Dining

To Finish...

Sweets to complete your dining experience:

Sweet Red Bean with Ice Cream

Served with your choice of green tea or black sesame ice cream £7

Mochi Ice Cream

Soft mochi filled with green tea, black sesame, mango, or vanilla ice cream £8

Banana Fritters

Crispy golden bananas drizzled with honey and served with your choice of ice cream £10

Ice Cream

Choose from durian, chocolate, vanilla, coconut, or strawberry £5 per scoop

